

Portable Electric Vehicle Charger QD07 User Manual

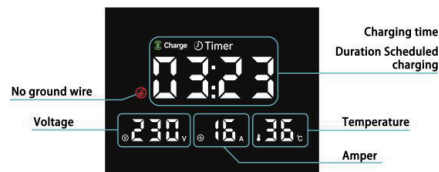
If you experience any issues while using it, do not hesitate to contact the customer service team associated with your purchase. Our experts are here to help. Please note that the information in this manual may change without prior notice due to continuous product enhancements, and the actual product may differ. We reserve the right to update the product as needed.

1. Cautions !

Before installing and using this product, please read through the instructions to check all warnings and precautions.

- 1.1: The 3.5kW model uses a 16A plug, suitable only for 16A sockets that comply with European standards. The socket's wiring must be at least 2.5mm² in cross-sectional area. Using non-compliant or worn-out sockets and cables can increase the risk of short circuits and fires caused by arcing.
- 1.2: The 7kW model features a specialized 32A plug and should be used exclusively with a grounded 32A wall socket. The wiring for this socket also requires a minimum thickness of 6mm². Like with the 3.5kW model, using outdated or non-compliant sockets and cables poses a significant risk of short circuits and fire due to arcing.
- 1.3: Always set the charging gun's current to be below the socket's maximum capacity to avoid hazards. For example, with a 10A socket, adjust the charging gun to 8A to prevent exceeding the safe limit of 10A. For a 16A socket, it's safe to set it at 13A, but do not go over 16A. Non-compliance can lead to short circuits and fire risks.
- 1.4: This product is designed to operate in temperatures ranging from -20°C to +50°C. Please avoid using it outside of this temperature range.
- 1.5: When charging, make sure the charger head is securely connected to the vehicle's interface. The connection indicator light (CC) will verify that the charger is properly linked to the vehicle.
- 1.6: When charging near children, ensure they are supervised and restrained as necessary. Children should not operate, pull on, or play near the charger.
- 1.7: During charging, avoid hanging the control box in a holder to prevent issues such as poor contact and erosion with the 220V power plug.
- 1.8: Do not use the product if it has been submerged in water. Protect the charger and control box from rain during charging to prevent damage.
- 1.9: When the charger is in use, steer clear of touching any metal conductors to avoid the risk of electric shock due to high currents.
- 1.10: The product's casing is made from thermoplastic material. Avoid impacts that could compromise its functionality and usability.
- 1.11: During charging, avoid excessively coiling the cable and ensure it does not rub against the ground to prevent damage to the cable's outer sheath.
- 1.12: If the charger cable is damaged or the charger casing is cracked, do not use the product. Instead, contact customer service for assistance.
- 1.13: To initiate charging, first connect the power source, and then attach the charger to the vehicle. To cease charging, first disconnect the charger from the vehicle, followed by unplugging it from the power source. It is imperative to avoid plugging in or unplugging the connector while it is energized.
- 1.14: Avoid placing the charger inside the vehicle or in enclosed spaces during charging. It should be kept away from objects that can generate high temperatures.
- 1.15: The included input cable must be at least a 3-core 6 square standard cable. If the cable length exceeds 100 meters, upgrade the cable specifications based on local electrical conditions.

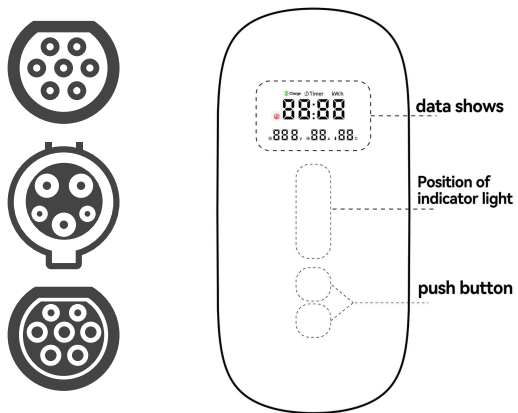
This product is suitable for both indoor and outdoor use.



2. Product Overview

This product complies with EN55032 EN55035 EN61000 standards.

It comprises a control box, charging gun, plug, and cables. This portable electric vehicle charging device allows car owners to charge their all-electric or plug-in hybrid vehicles safely and conveniently using a standard household power outlet. Avoid environments with corrosive gases such as acids and alkalis, direct rainfall, or high temperatures to prevent damage to the product casing.



The product offers customization compliant with EU, US and national standards.

3. Product Specifications

No.	Technical Index	Parameters	
1	Product Patent	2023306825949	
2	Rated Input/Output Voltage	AC 230V±10%	
3	Product	QD07	QD07
4	Rated Input/Output Current	16A Max	32A Max
5	Rated Power	3.5kW Max	7kW Max
6	Safety Features	Low voltage protection, high voltage protection, overcurrent protection, Short circuit protection, overload protection, leakage protection, Low temperature protection, high temperature protection, lightning protection, Grounding protection, CP abnormality protection	
7	Operating Environment Temperature	-20°C ~ +50°C / 5% ~ 95%	
8	Operating Altitude	< 2000m	
9	Protection Rating	IP55	
10	Cooling Method	Natural air cooling	
11	Control Box Dimensions	220*100*50mm	
12	Cable Length	Actual length is subject to customer demand	
13	Standards Followed	EN61851 EN62196 EN61000 GB/T 18487.1-2023 UL2594	

4. Product Function Description

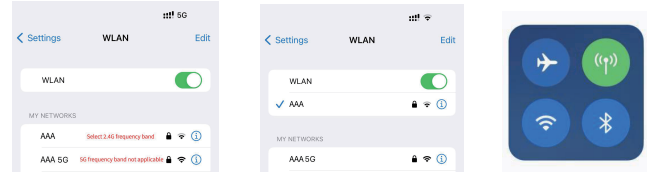
NO.	Feature	Function Description	Display	Remarks
1	Display	Displays real-time information including charging volume, duration, current, and host temperature		
2	Current Adjustment	8A/10A/13A/16A/20A/26A/28A/32A		Press and hold the button (Ⓢ) for 3 seconds to switch the current.
3	Scheduled Charging	0H-12H		Press and hold the button (Ⓢ) for 3 seconds to schedule charging.
4	Ground Detection	If no ground wire is detected, protection is activated (7kW models must be grounded).	Ⓢ	Normal charging
5	Emergency Charging	Operates in ungrounded mode (Note: 7kW models must be grounded).		Using the emergency charging mode for extended periods is not recommended.
6	Low Voltage Protection	Activates protection when the input voltage drops below 89V AC.	E1	The voltage resumes charging normally
7	High Voltage Protection	Activates protection when the input voltage exceeds 270V AC.	E2	The voltage resumes charging normally.
8	Overcurrent Protection	Activates protection in the event of an overcurrent.	E3	Pull out the gun to remove the protection.
9	Short Circuit Protection	Protection activates if a short circuit occurs.	E4	Pull out the gun to remove the protection. Power off and restart.
10	Overload Protection	Activates protection when an overload occurs.	E5	Pull out the gun to remove the protection. Power off and restart.
11	Leakage Protection	Activates protection when leakage is detected.	E6	the protection. Power off and restart.
12	High Temperature Protection	Activates protection if the temperature of the control box or plug exceeds 85°C.	E8	Less than 50°C to remove protection
13	CP Abnormal Protection	Activates protection if the charger fails to properly handshake with the vehicle.	E10	Pull out the gun to remove the protection

Note: Due to limitations with some vehicle systems, protection may not automatically disengage, requiring a power reset.

5.Bind/unbindoperationAPPinstructions (optional version)

Bind APP

1. Turn on WIFI on the mobile phone and connect to the network (5G frequency band is not supported for the time being, and if there is no WIFI in the location, you can use another device to transmit a hotspot to connect), and turn on the Bluetooth switch;

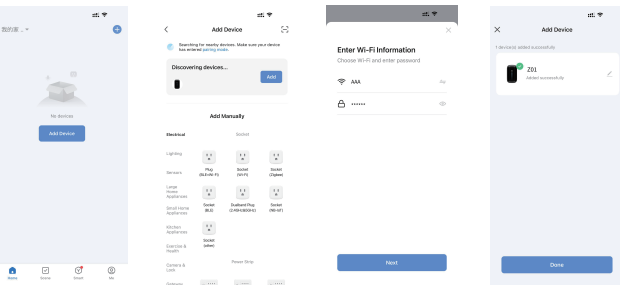


2. Download and install the "smart Life" App in major application markets of mobile phone. open the App for the first time and register an account. After registration, enter the App homepage interface;



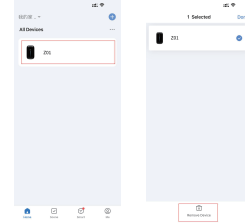
Smart Life

3. Click Add Settings on the home page, and find the button Addition of Device. Input the WIFI account password connected to the mobile phone, and click Next to add the device.If the addition fails, please disconnect the charging pile input power and try repeatedly;



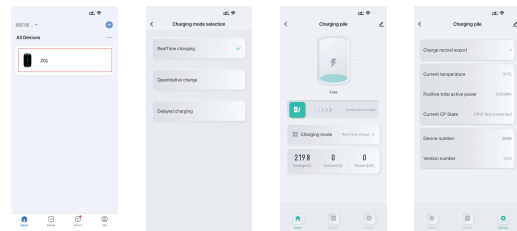
Unbind APP

1. Bind the mobile phone and open the App on the home page and long press the device;
- 2.Click Remove Device to complete the unbinding



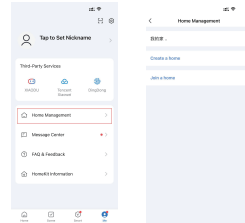
Use the App to charge

- 1.Click on the home page equipment;
2. Select charging mode, instant charging, quantitative charging and delayed charging;
- 3.Slide the switching on to start charging;
- 4.Click Settings to view the device information



Family sharing

- 1.Click me to enter home management;
- 2.Choose to create a home to share the device.



6.Function Description

- 6.1: This product's 16A plug is compatible with standard 16A wall sockets; the 32A plug fits into corresponding 32A wall sockets. Connect the charging gun to the power supply, the device enters standby mode, and the blue light breathing.
- 6.2: To select a charging mode, complete all settings before inserting the charger.

***Note: Ensure all settings are completed before inserting the charger.**

A.Current Switching Instructions

- 1: Press and hold the touch button (Ⓢ) for 3 seconds. The current value will flash, allowing you to click and switch the current. Choose from 8A, 10A, 13A, 16A, 20A, 24A, 26A,28A,or 32A. To confirm the current setting, press and hold the button for another 3 seconds.
- 2: Insert the charger to begin normal charging mode.

Note:

1. The product remembers the last current setting. Please ensure the current is appropriate when changing charging environments.
2. The charging gun's current setting must be lower than the maximum capacity of the socket used. For example, with a 10A socket, adjust the charging gun to 8A to avoid exceeding 10A. When using a 16A socket, adjust to 13A, ensuring it does not exceed 16A. This is crucial to avoid risks such as short circuits and fires due to erosion.

B.Sccheduled Charging Instruction

- 1: Press and hold the touch button (Ⓢ) for 3 seconds until the timer value flashes.Click to select the desired delay time from 0H- 12H.Confirm the time by pressing and holding the button for another 3 seconds, which starts the countdown mode on the display.Please plug in the charger promptly after setting the timer.
- 2: Once the countdown ends, the charger automatically transitions to normal charging mode.
- 3: If the countdown has not completed and you wish to start charging immediately, press and hold the right button for 3 seconds to manually enter charging mode.

C.Emergency Charging Instructions

- 1: The product automatically detects the grounding status;
- 2: If a ground wire abnormality is detected, the icon (⚡) blinking, and the charger normal charges.

Attention:

1. If ground abnormalities are detected, it is advisable to cease charging and switch to a properly grounded socket.
2. Prolonged use of emergency charging mode is discouraged.
3. The 7KW model must be connected to a grounded wall socket to prevent the risk of electric shock from ungrounded usage.

D.Normal Charging Instructions

- 1: To start charging immediately, plug the charger into the vehicle. The charger will commence normal charging, and the display will show real-time metrics such as charging volume, duration, current, and host temperature;
- 2: Once the vehicle is fully charged, the charging timer stops, and the display updates to show the current charging volume and the total duration of the charge. At this point, the user should disconnect the charger (some vehicles may require unlocking the charger lock). Following this, the control box will revert to standby mode.

Attention: During normal charging, do not forcibly remove the charger head.

7.Indicator light display

No.	Item	Indicator Light Display
1	Standby	Blue light breathing
2	Scheduled	Blue light breathing
3	Booking a countdown for charging	Blue light breathing
4	Set current	Blue light blinking
5	Charging	Blue light flow
6	Completing charging	Blue light always on
7	Charging failure	Red light breathing

8.Packing List

No.	Item	Indicator Light Display
1	Portable Charging Gun Main Unit	Includes gun cable and charging gun
2	User Manual	
3	Certification of Compliance	

9.Warranty Regulations

- 9.1: The product is covered by a warranty for one year from the date of purchase, addressing product quality issues.
- 9.2: During the warranty period, failures that occur under the conditions prescribed in the user manual (as determined by our company's official staff) will be repaired free of charge.
- 9.3: Repairs will be charged in the following situations:
 - (1) Failure to provide this warranty card and valid proof of purchase.
 - (2) Faults and damage due to incorrect installation, testing, unauthorized disassembly, or human-induced damage.
 - (3) Faults and damage from improper use or attempts at self-repair.
 - (4) Faults and damage from transport, movement, or dropping post-purchase.
 - (5) Faults and damage from unavoidable external factors.
 - (6) Damage from improper use such as immersion in water or exposure to other solutions.
 - (7) Damage from using an unspecified power source or incorrect voltage.
- 9.4: The warranties provided are exclusive and no other express or implied warranties are given, including but not limited to implied warranties of merchantability, fitness for a particular purpose, and any other implied warranties, whether in contract, tort, or otherwise. The company is not liable for any special, incidental, or consequential damages.
- 9.5: This warranty card is only valid within Mainland China.